

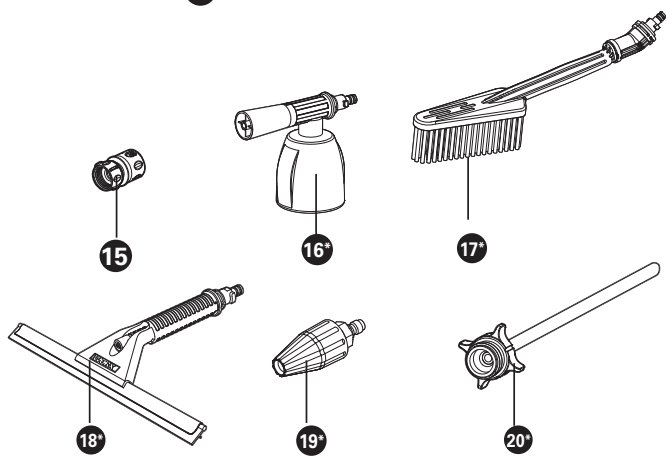
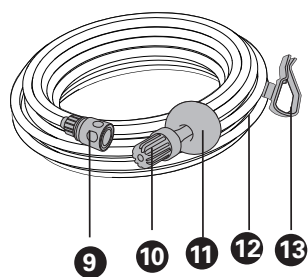
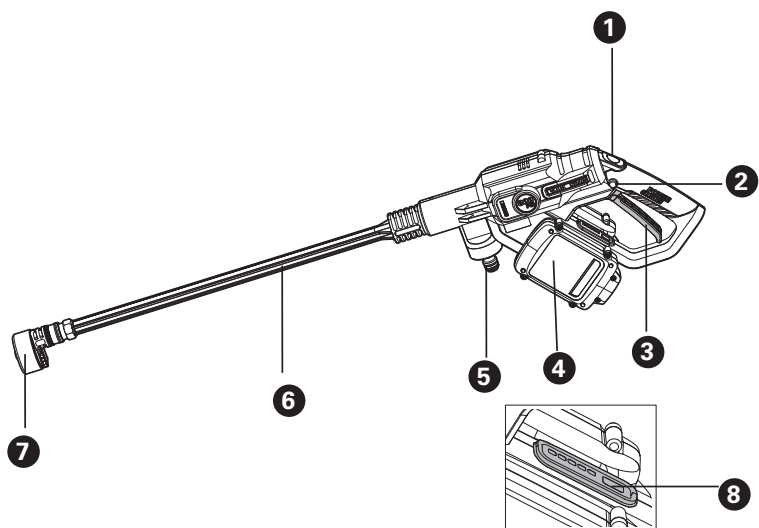
HYDROSHOT™

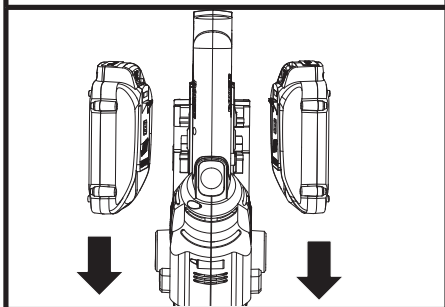
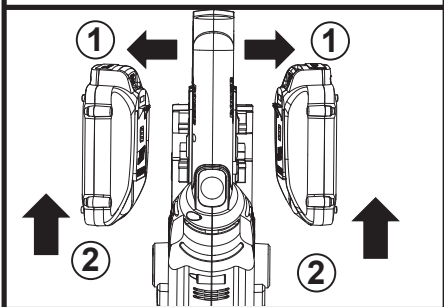
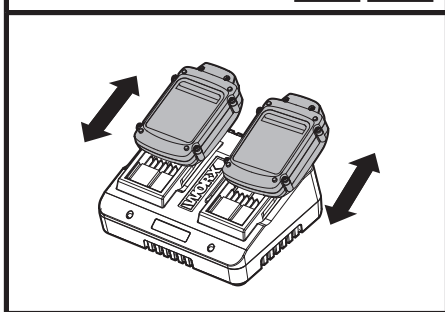
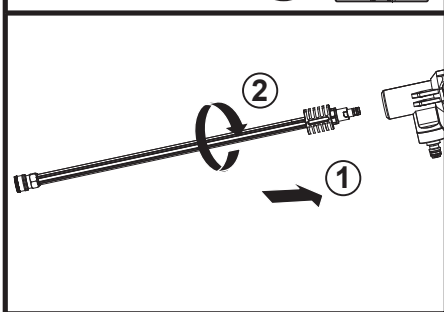
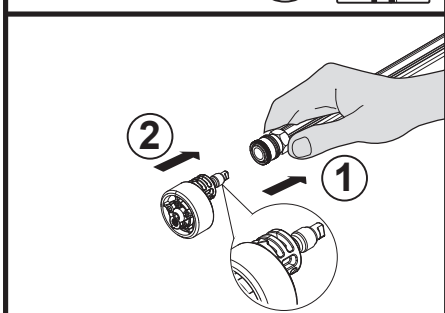
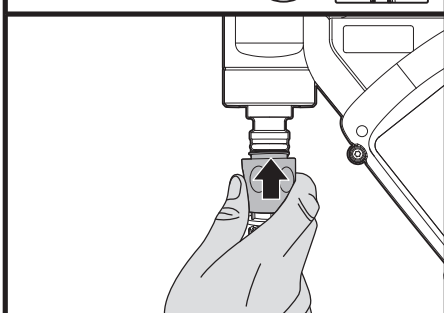
Cordless Portable Power Cleaner	EN	P09
Nettoyant électrique portable sans fil	F	P18
Lavador a presión portátil inalámbrico	ES	P27

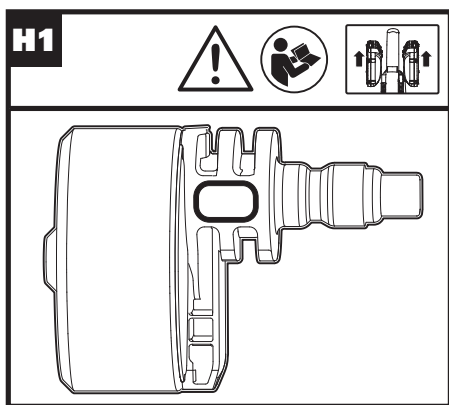
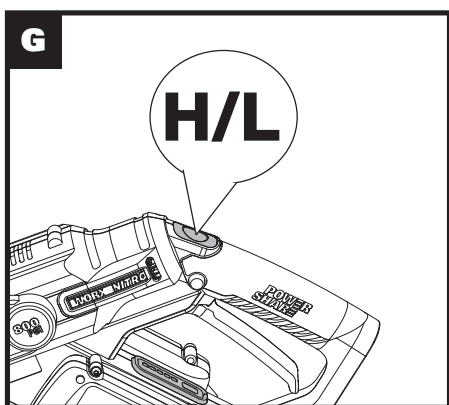
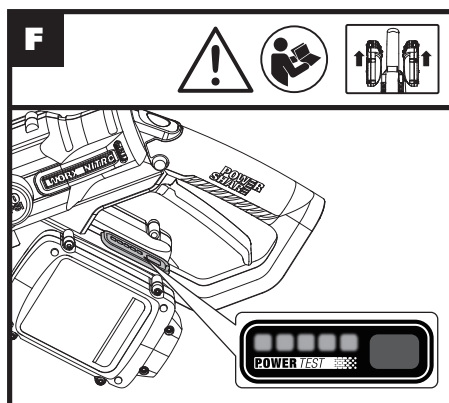
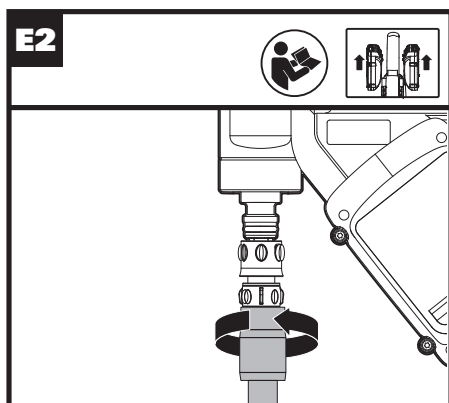
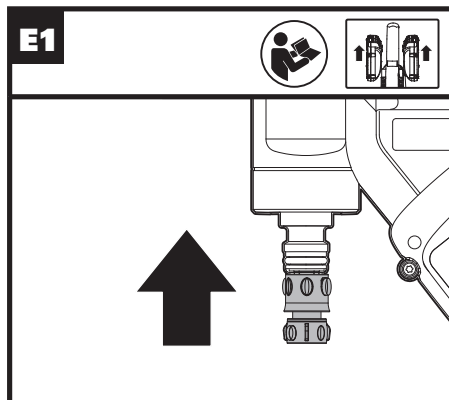
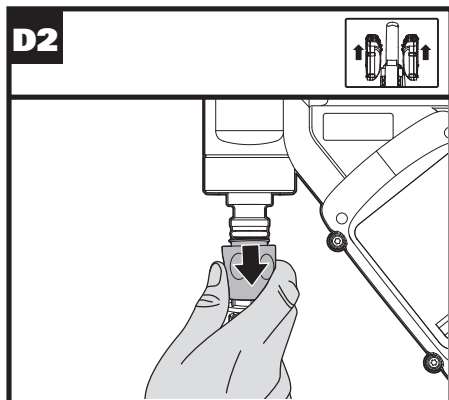


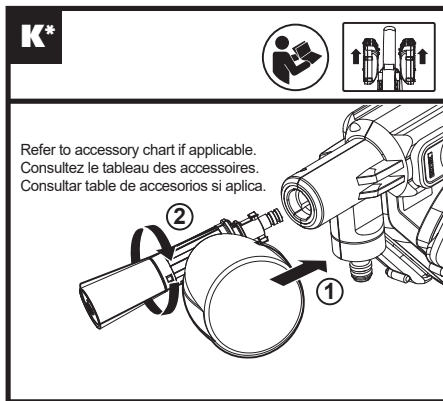
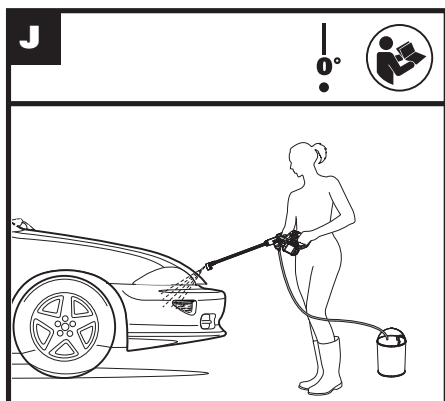
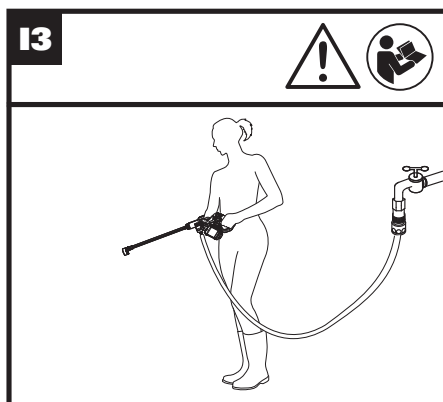
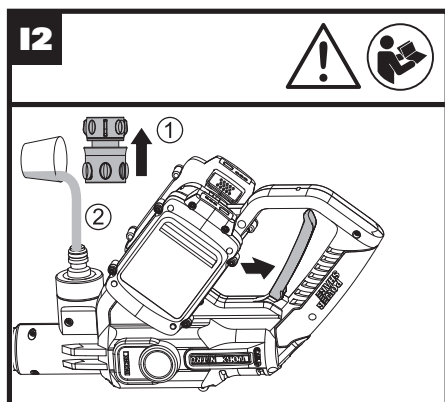
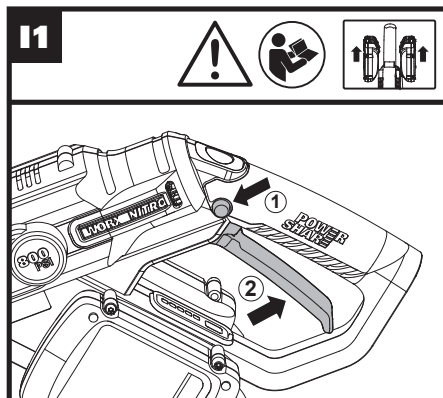
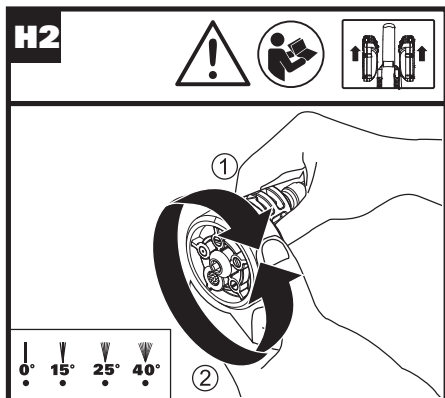
HELPLINE NUMBER
NUMERO DU SERVICE D'ASSISTANCE
NUMERO DE LINEA DE AYUDA
1-866-354-WORX (9679)

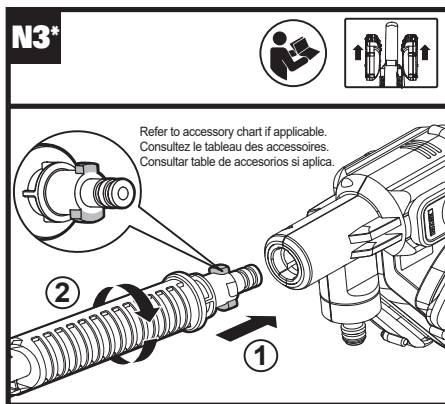
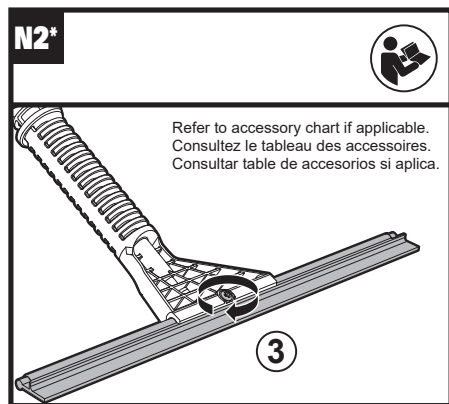
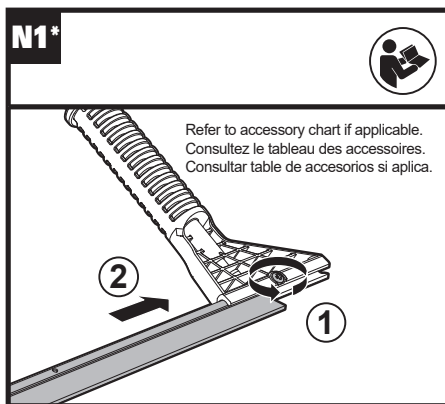
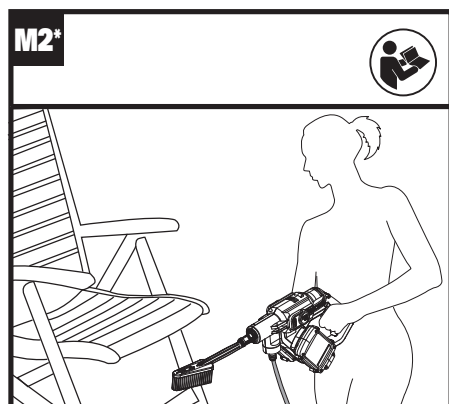
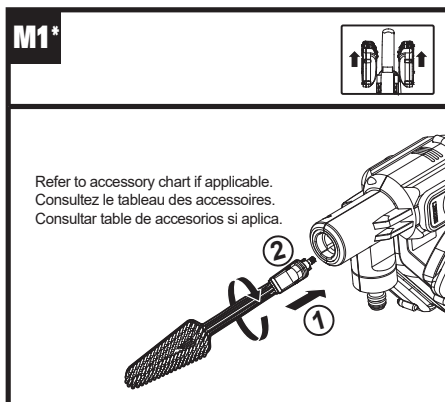
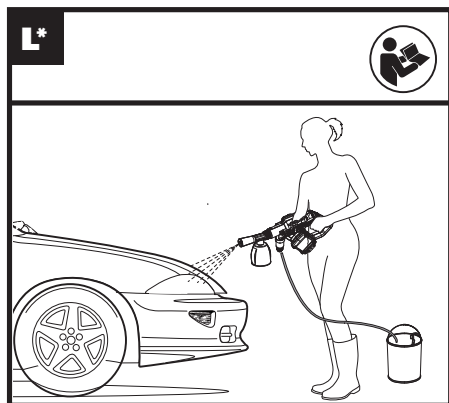
WG647 WG647.X

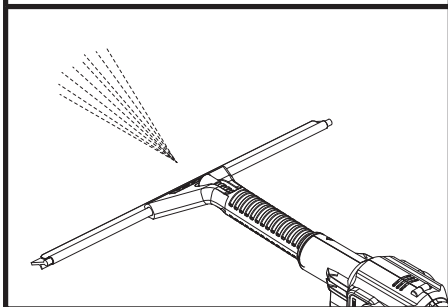
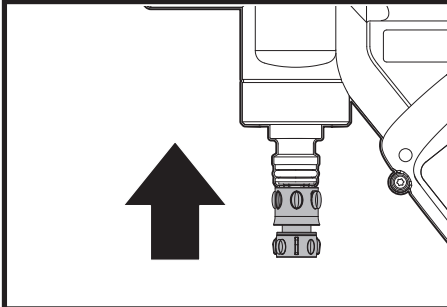


A1**A2****A3****B****C****D1**





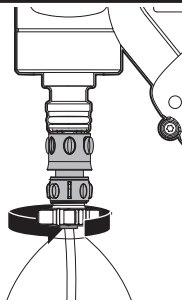
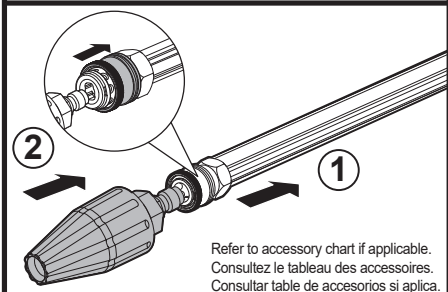
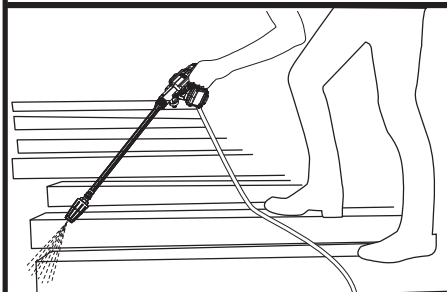


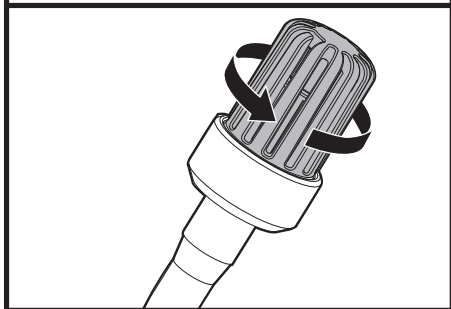
N4***01*****02***

Refer to accessory chart if applicable.
Consultez le tableau des accessoires.
Consultar table de accesorios si aplica.

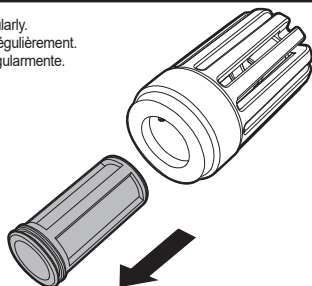
**03***

Refer to accessory chart if applicable.
Consultez le tableau des accessoires.
Consultar table de accesorios si aplica.

**P1*****P2***

Q1**Q2**

Clean regularly.
Nettoyez régulièrement.
Limpiar regularmente.

**R**

Clean regularly.
Nettoyez régulièrement.
Limpiar regularmente.

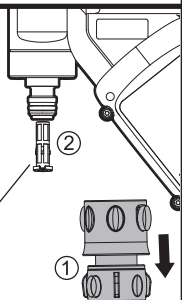


TABLE OF CONTENTS

1. PRODUCT SAFETY
2. COMPONENT LIST
3. TECHNICAL DATA
4. OPERATING INSTRUCTIONS
5. ATTACHMENT OF ACCESSORIES
5. MAINTENANCE
7. CLEANING/STORAGE
8. TROUBLESHOOTING

1. PRODUCT SAFETY



WARNING: Read all safety warnings and all instructions. Failure to follow the warnings and instructions may result in electric shock, fire and/or serious injury.
Save all warnings and instructions for future reference.




WARNING: This product can expose you to chemicals including lead and Di(2-ethylhexyl)phthalate (DEHP) which are known to the State of California to cause cancer and birth defects or other reproductive harm. For more information go to www.P65Warnings.ca.gov.

IMPORTANT SAFETY INSTRUCTIONS



WARNING: When using this product basic precautions should always be followed, including the following:

1. Read all the instructions before using the product.
2. To reduce the risk of injury, close supervision is necessary when a product is used near children.
3. Know how to stop the product and bleed pressures quickly. Be thoroughly familiar with the controls.
4. Stay alert – watch what you are doing.
5. Do not operate the product when fatigued or under the influence of alcohol or drugs.
6. Keep operating area clear of all persons
7. Do not overreach or stand on unstable support. Keep good footing and balance at all times.
8. Follow the maintenance instructions specified in the manual.
9.  **WARNING** – Risk of injection or injury– do not direct discharge stream at persons.
10. Do not spray electrical apparatus and wiring.

SAVE THESE INSTRUCTIONS




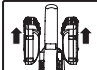



FOR ALL BATTERY – OPERATED OUTDOOR PRODUCTS:

1. Prevent unintentional starting. Ensure the switch is in the off-position before connecting to battery pack, picking up or carrying the product. Carrying the product with your finger on the switch or energizing product that have the switch on invites accidents.
2. Disconnect the battery pack from the product before making any adjustments, changing accessories, or storing product. Such preventive safety measures reduce the risk of starting the product accidentally.
3. Recharge only with the charger specified by the manufacturer. A charger that is suitable for one type of battery pack may create a risk of fire when used with another battery pack.
4. Use products only with specifically designated battery packs. Use of any other battery packs may create a risk of injury and fire.
5. When battery pack is not in use, keep it away from other metal objects, like paper clips, coins, keys, nails, screws or other small metal objects, that can make a connection from one terminal to another. Shorting the battery terminals together may cause burns or a fire.
6. Under abusive conditions, liquid may be ejected from the battery; avoid contact. If contact accidentally occurs, flush with water. If liquid contacts eyes, additionally seek medical help. Liquid ejected from the battery may cause irritation or burns.
7. Do not use a battery pack or product that is damaged or modified. Damaged or modified batteries may exhibit unpredictable behavior resulting in fire, explosion or risk of injury.
8. Do not expose a battery pack or product to fire or excessive temperature. Exposure to fire or temperature above 130°C may cause explosion.
9. Follow all charging instructions and do not charge the battery pack or product outside of the temperature range specified in the instructions. Charging improperly or at temperatures outside of the specified range may damage the battery and increase the risk of fire.
10. Have servicing performed by a qualified repair person using only identical replacement parts. This will ensure that the safety of the product is maintained.
11. Do not modify or attempt to repair the product or the battery pack (as applicable) except as indicated in the instructions for use and care.

SAFETY WARNINGS FOR BATTERY PACK

- a) Do not dismantle, open or shred battery pack.
- b) Do not expose battery pack to heat or fire. Avoid storage in direct sunlight.
- c) Do not short-circuit a battery pack. Do not store battery packs haphazardly in a box or drawer where they may short-circuit each other or be short-circuited by other metal objects. When battery pack is not in use, keep it away from other metal objects, like paper clips, coins, keys, nails, screws or other small metal objects, that can make a connection from one terminal to another. Shorting the battery terminals together may cause burns or fire.
- d) Do not subject battery pack to mechanical shock.
- e) In the event of battery leaking, do not allow the liquid to come in contact with the skin or eyes. If contact has been made, wash the affected area with copious amounts of water and seek medical advice.
- f) Do not use any battery pack which is not designed for use with the equipment.
- g) Keep battery pack out of the reach of children.
- h) Always purchase the battery pack recommended by the device manufacturer for the equipment.
- i) Keep battery pack clean and dry.
- j) Wipe the battery pack terminals with a clean dry cloth if they become dirty.
- k) Battery pack needs to be charged before use. Always use the correct charger and refer to the manufacturer's instructions or equipment manual for proper charging instructions.
- l) Do not leave battery pack on prolonged charge when not in use.
- m) After extended periods of storage, it may be necessary to charge and discharge the battery pack several times to obtain maximum performance.
- n) Recharge only with the charger specified by Worx. Do not use any charger other than that specifically provided for use with the equipment.
- o) Retain the original product literature for future reference.
- p) Use only the battery pack in the application for which it was intended.
- q) Remove the battery pack from the equipment when not in use.
- r) Dispose of properly.
- s) Do not mix cells of different manufacture, capacity, size or type within a device.
- t) Keep the battery away from microwaves and high pressure.

SYMBOLS

	To reduce the risk of injury, user must read instruction manual
	Warning
	Li-Ion battery, battery must be recycled
	Remove battery from the socket before carrying out any adjustment, servicing or maintenance.
	Do not burn
	Batteries may enter water cycle if disposed improperly, which can be hazardous for ecosystem. Do not dispose of waste batteries as unsorted municipal waste.
	call2recycle® POSITEC Inc. has established a partnership with the RBRC Corporation to recycle any Positec batteries with the RBRC-call2recycle seal. For environmental protection, please do not discard batteries in the trash. After the batteries' life cycle is ended, then please call 1-800-822-8837 for a free service that will properly dispose of the battery.

2. COMPONENT LIST

1. HI/LO PRESSURE-SETTING BUTTON
2. LOCK-OFF SWITCH
3. ON/OFF TRIGGER

4.	BATTERY PACK *
5.	HOSE QUICK-CONNECT ADAPTER
6.	PRESSURE CLEANING LANCE
7.	MULTI-SPRAY NOZZLE
8.	BATTERY POWER INDICATOR
9.	DRAW-HOSE QUICK-CONNECT ADAPTER
10.	DRAW-HOSE WATER FILTER
11.	FLOATER
12.	DRAW HOSE
13.	HOSE CLIP
14.	WATER FILTER (SEE FIG. R)
15.	QUICK CONNECT ADAPTER
16.	SOAP BOTTLE*
17.	BRUSH*
18.	SQUEEGEE *
19.	TURBO NOZZLE*
20.	WATER BOTTLE ADAPTER*

* Not all the accessories illustrated or described are included in standard delivery. Visit worx.com to learn more about these available accessory options.

3. TECHNICAL DATA

	WG647 WG647.X **
Voltage	40V \equiv Max. (2x20V Max.)***
	High / Low (based on garden hose connected)
Rated pressure	550psi(Allowable pressure max 800psi)
Max. water flow rate	0.9gpm (1.0 MAX gpm)
Max. inlet water pressure	87psi (0.6MPa)
Water suction height	max. 5ft.
Water temperature	max. 104° Fahrenheit
Battery type	Lithium-ion
Machine Weight (bare tool)	2.65lbs(1.2 kg)

** "The "X" noted at the end of the model number is

a placeholder that represents a variation to the original model (kit contents or packaging change). "X" may be replaced with any number from "1" to "999" or English letter "A" to "Z" or "M1" to "M9".

*** Voltage measured without workload. Initial battery voltage reaches maximum of 20 volts. Nominal voltage is 18 volts

SUGGESTED BATTERIES AND CHARGERS

Category	Type	Capacity
20V Battery	WA3575	2.0 Ah
20V Charger	WA3770	2.0A

4. OPERATING INSTRUCTIONS



NOTE: Before using the tool, read the instruction book carefully.

ASSEMBLY & OPERATION

ACTION	FIGURE
BEFORE OPERATION	
Installing the battery pack NOTE: This machine will only run when 2 batteries are installed. It is recommended to use the same two batteries and charge the two batteries at the same time. Using two batteries with different amp hour capacity, the machine will only run to the lower common denominator.	See Fig. A1
Removing the battery pack	See Fig. A2
Charging the battery pack NOTE: The batteries are shipped uncharged. Each battery must be fully charged before the first use. Always fully charge the two batteries at same time. More details can be found in charger's manual.	See Fig. A3
ASSEMBLY	
Attaching pressure cleaning lance to the HydrosHOT. NOTE: When attaching, align the two projections on the lance with the grooves on the front-end of the HydrosHOT in Fig. B.	See Fig. B

Attaching the multi-spray nozzle NOTE: After attaching, try gently pulling the nozzle to make sure it is locked into position securely.	See Fig. C	Start NOTE: At the first use or after long-term storage, it is recommended to use a garden hose to attach directly to a water spigot or inject water into the Hydroshot with the machine turned on, so as to empty the air. Do not start working until the water goes up along the hose and sprays out. NOTE: If air builds up within the hose or pump, the water pressure will drop. First, restart the machine, then air will be released through the multi-spray nozzle along with any excess water.	See Fig. 11,12,13										
Attaching the draw hose to the Hydroshot NOTE: After the draw hose is attached, check the connection by gently pulling upon the draw hose to ensure it is locked into position securely.	See Fig. D1												
Detaching the draw hose	See Fig. D2												
Attaching your own water hose (optional) 1. Attach the quick-connect adapter to the garden hose. 2. Connect the hydroshot and garden hose quick-connect adapters together. 3. To connect a garden hose without any adapters, remove the quick-connect adapter from the Hydroshot and connect directly to the garden hose (See Fig. R) NOTE: Check whether the filter is missing before retightening the hose adapter. (Fig. R) When retightening the hose adapter, please tighten securely. Otherwise, it may not draw any water for proper operation. WARNING: It is not recommended to connect the provided draw hose to your garden hose or your home spigot.	See Fig. E1, E2	Cleaning WARNING: Do not connect the machine to water supplies that are dirty, rusty, muddy, or corrosive. (Including window cleaning liquids, plant foods, or fertilizers etc.) NOTE: It is recommended to use the high pressure mode for cleaning. Not recommended for use with salt water, immediately rinse with fresh water for proper maintenance.	See Fig. J										
OPERATION													
Battery power indicator on the machine See details in BATTERY STATUS part	See Fig. F	BATTERY STATUS (See Fig. F) Before starting or after use, press the button beside the power indicator light on the machine to check the battery capacity. During operation, the battery capacity will be indicated automatically by the battery power indicator. The indicator constantly senses and displays the battery condition as follows. For a machine with 2 battery packs with different power levels, the power indicator light displays the battery condition with the lower power level of the two batteries.											
Pressure setting Your Hydroshot has two pressure modes, High and Low, delivering different pressure settings per mode.	See Fig. G	<table><tr><th>Battery power indicator status</th><th>Battery condition</th></tr><tr><td>Five green lights (■■■■■) are illuminated.</td><td>The two batteries are in a highly charged condition.</td></tr><tr><td>Two, three or four green lights are illuminated.</td><td>The two batteries have a remaining charge. The more lights are illuminated, the more battery capacity.</td></tr><tr><td>Only one green light (■) is illuminated.</td><td>The battery level of at least one battery pack is very low. Please check and charge the battery pack.</td></tr><tr><td>No light is illuminated.</td><td>At least one battery is not fully installed or battery may be defective.</td></tr></table>		Battery power indicator status	Battery condition	Five green lights (■■■■■) are illuminated.	The two batteries are in a highly charged condition.	Two, three or four green lights are illuminated.	The two batteries have a remaining charge. The more lights are illuminated, the more battery capacity.	Only one green light (■) is illuminated.	The battery level of at least one battery pack is very low. Please check and charge the battery pack.	No light is illuminated.	At least one battery is not fully installed or battery may be defective.
Battery power indicator status	Battery condition												
Five green lights (■■■■■) are illuminated.	The two batteries are in a highly charged condition.												
Two, three or four green lights are illuminated.	The two batteries have a remaining charge. The more lights are illuminated, the more battery capacity.												
Only one green light (■) is illuminated.	The battery level of at least one battery pack is very low. Please check and charge the battery pack.												
No light is illuminated.	At least one battery is not fully installed or battery may be defective.												
Selecting the nozzle pattern NOTE: Choose a suitable nozzle pattern according to your work. Spray patterns 0°, 15°, 25° and 40° are applicable for cleaning. WARNING: Do not shift the nozzle pattern when the tool is powered on due to potential temporary water leakage. Make sure the nozzle pattern symbol aligns with the indicator mark on tool, otherwise the nozzle will leak and there will be no sufficient working pressure.	See Fig. H1, H2												

Only one light is flashing twice per cycle.	At least one battery is over discharged (please refer to the battery charge condition), please recharge the two batteries at once before use again or storage.
Only one light is flashing three times per cycle.	At least one battery is hot, wait for them cool down before start again.
Only one light is flashing four times per cycle.	The machine is over load.

5. ATTACHMENT OF ACCESSORIES

A number of accessories have been supplied with this product and are required for use in different applications. **Do not attempt to use the cleaner with no lance or accessories attached.**

1. Soap bottle (WA4036, sold separately)

Soap bottle provides detergent suds for deeper cleaning of dirt. It is used in conjunction with Hydroshot or extension lance (WA4012). (See Fig. K, L)

NOTE: Make sure the machine is connected to the water source before using the soap bottle.

2. Brush (WA4048, sold separately)


Brush is for cleaning cars, boats, motorcycles etc. It is used in conjunction with Hydroshot or extension lance (WA4012). (See Fig. M1, M2)

3. Squeegee (WA4050, sold separately)

The window squeegees quick connection easily snaps into the tool to spray water or wipe off water from glass or tiled surfaces. Suitable for the HYDROSHOT™ power cleaner or extension lance (WA4012). (See Fig. N1-N4)

4. Water Bottle Adapter (WA4038, sold separately)

The bottle cap connector accessory allows the tool to directly connect with most 2 Liter bottles with approximately 1" openings. (NOTE: May not fit all consumable soda and water bottles) (See Fig. O1-O3)

 **WARNING:** Do not install the water bottle adapter accessory until it is ready to be used. The accessories vents will leak liquid, if a bottle is installed, with the machine lying on a surface.

5. Turbo nozzle (WA4037, sold separately)

The turbo nozzle delivers 360° of rotating water, which cleans a larger area than the 0° water pattern during the same time period. Suitable

with the pressure cleaning lance installed on the HYDROSHOT™. Recommend to use it with high pressure setting. (See Fig. P1, P2)

6. MAINTENANCE

Remove the battery pack from the tool before carrying out any adjustment, servicing or maintenance.

Inspect the product for damaged or worn parts before each use. Do not operate it if you find damaged or worn parts. Contact your supplier or the manufacturer for replacement parts.


Hose filter maintenance

Unscrew the hose filter from the hose and remove the strainer. Rinse the parts with clean water before reassembling. (See Fig. Q1, Q2)

Filter maintenance (See Fig. R)

Rinse it with clean water before reassembling.

NOTE: When retightening the hose adapter, please tighten securely. Otherwise, it may not draw any water for proper operation.

 **WARNING: Any other servicing should be performed by an authorized service representative.**

7. CLEANING/STORAGE

Before storage, completely drain all the water from the machine and hose.

Clean the moulded plastic housing of the machine using a soft brush and clean cloth. Do not use water, solvents or polishes. Store in a secure and dry place out of the reach of children. Do not place other objects on the product.

Store the machine and the accessories in a frost free place.

8. TROUBLESHOOTING

Symptom	Possible causes	Solution
Machine turns on but it does not draw any water or there is not sufficient pressure.	Hydroshot is being held too high from the water source. NOTE: The higher the Hydroshot is held in the air, the harder the pump needs to work to draw water (up) against gravity.	Hold the Hydroshot lower to the ground (less than 5' off of the ground) to improve water flow.
	Hose filter is blocked.	Take out the hose filter and rinse the parts with clean water. (See Fig. Q1, Q2)
	The users garden hose is not well connected to the machine.	Check and reattach the garden hose tightly. (See Fig. E2)
	Hose Quick-Connect Adapter gets loose.	Tighten the hose adapter securely with a wrench.
	The filter is missing. (See Fig. R)	Contact customer service to request a replacement part.
	The filter screen is blocked. (See Fig. R)	Clean the filter screen regularly.
	Pump, hose, or other parts are frozen due to outside temperatures.	Wait for the pump, hose or other parts to thaw.
	Hose kinks.	Straighten out the hose.
Multi-spray nozzle leaks.	An excessive amount of air can be in the hose and Hydroshot.	If air builds up within the hose or pump, the water pressure will drop. 1) Hold the Hydroshot lower to the ground (less than 5' off of the ground) to improve water flow. 2) "Pre-fill the draw-hose" completely with water to ensure all air is removed. 3) Operate the hydroshot without the lance or nozzle attached to allow a higher volume of water to quickly and easily flow throw the unit. Once all air pockets appear to be removed, reinstall the lance and nozzle. 3) Connect directly to a water spigot with garden hose to clear all air from the system. Refer to figures I1, I2, I3.
	The nozzle pattern does not spray correctly.	Make sure the nozzle pattern symbol aligns with the indicator mark on tool.
Outlet pressure increases suddenly.	Air built up within the hose or pump.	Continue to operate the machine for a few moments until leakage stops. Refer to comments from above to remove air pockets.
Machine drains out water after stopping.	Multi-spray nozzle is blocked.	Clear any visible debris with a small object such as a paper clip. Replace with a new multi-spray nozzle.
Soap accessory cannot spray out any detergent.	There is water remaining in the lance and pump after stopping.	Remove batteries and hoses. Press trigger and rotate the Hydroshot in various directions to allow all water to drain.
	Blockage in the soap bottle.	Clean it with fresh water.
	The machine is not connected to the water source.	Connect to the water source before turning on the machine.

Machine does not start.	The battery pack is not attached well.	Reinstall the battery pack.
	Battery pack charge has been depleted.	Replace with a new battery pack or recharge the battery pack.
	Defective battery.	Replace with a new battery pack.
Machine pressure is not consistent.	Additional air could be sucked into the machine.	Check connection between the hose adapter and the draw hose.
	It is at low pressure setting.	No action need.
Machine stops automatically.	Battery pack charge has been depleted.	Replace with a new battery pack or recharge the battery pack.
	The multi-spray nozzle is blocked. The current protection is activated.	Remove the multi-spray nozzle and turn on the machine. If the machine works normally, replace with a new multi-spray nozzle.
The end of the draw hose will not stay submerged.	There is air remaining in the draw hose and/or the float is not adjusted properly.	Ensure all air is removed from draw hose. Adjust float location on draw hose to allow filter to sit well below water's surface, yet just above water source's bottom where filter may quickly fill with debris.
Machine does not draw any water after long time storage.	Additional air could be sucked into the machine.	1) Hold the HydrosHOT lower to the ground (less than 5' off of the ground) to improve water flow. 2) "Pre-fill the draw-hose" completely with water to ensure all air is removed. 3) Operate the hydrosHOT without the lance or nozzle attached to allow a higher volume of water to quickly and easily flow throw the unit. Once all air pockets appear to be removed, reinstall the lance and nozzle. 3) Connect directly to a water spigot with garden hose to clear all air from the system. Refer to figures I1, I2, I3.