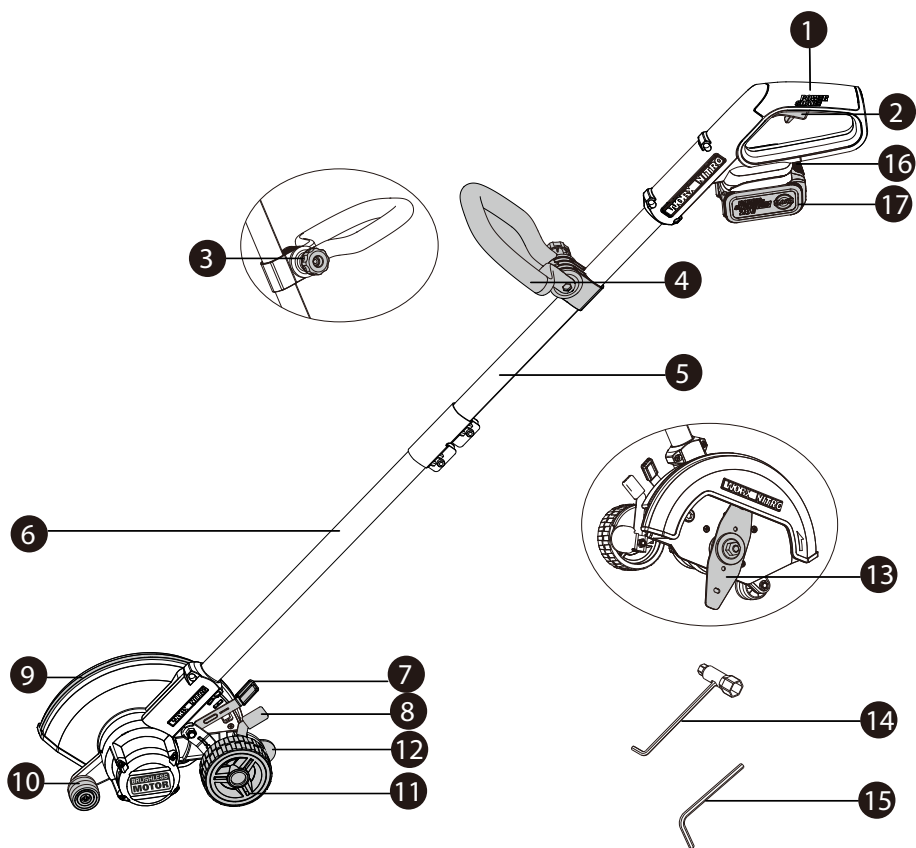
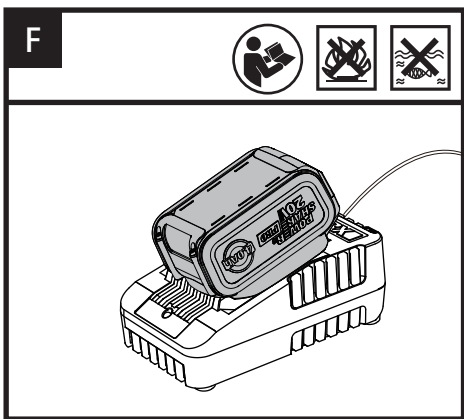
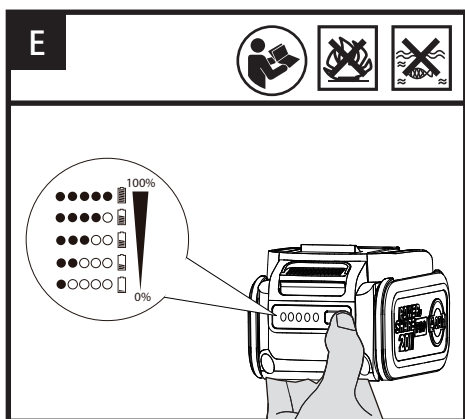
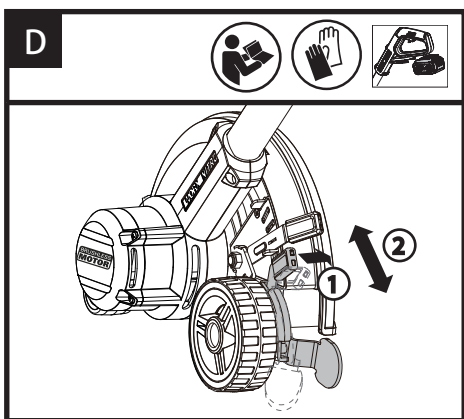
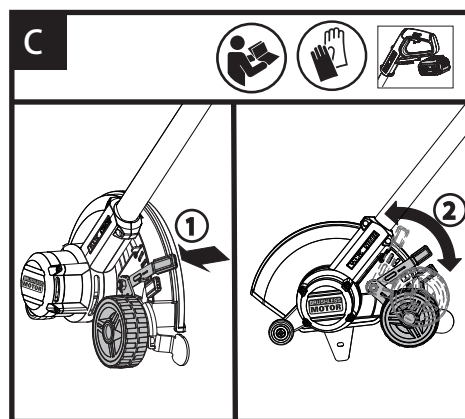
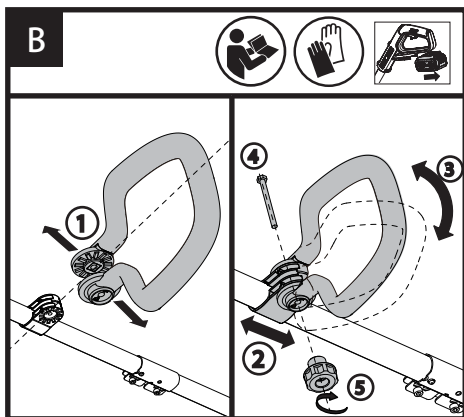
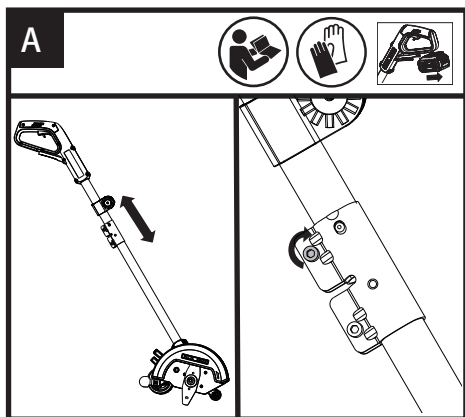
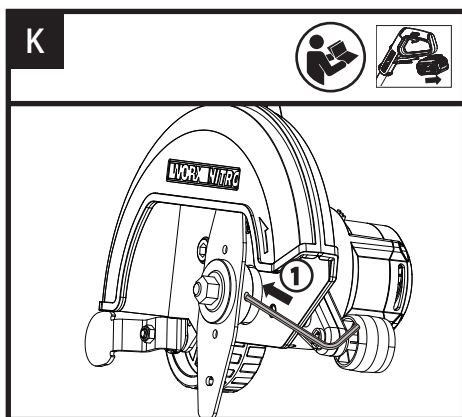
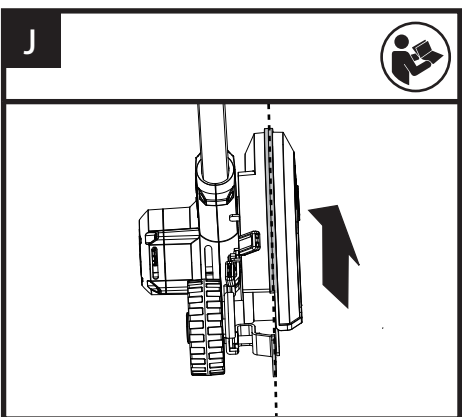
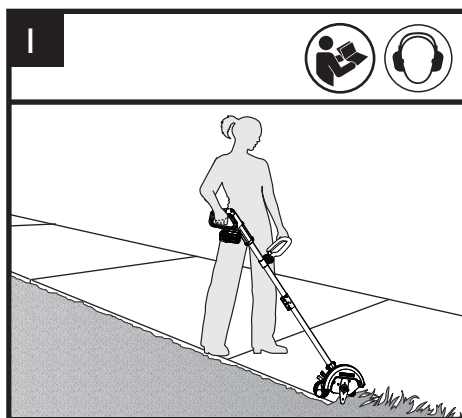
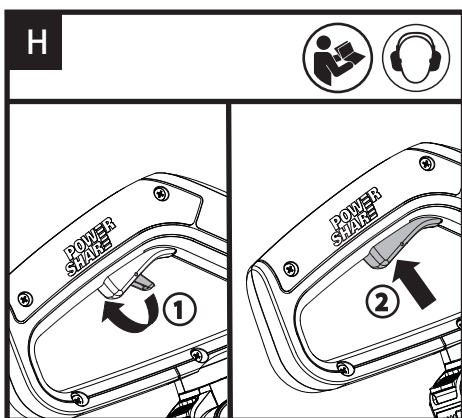
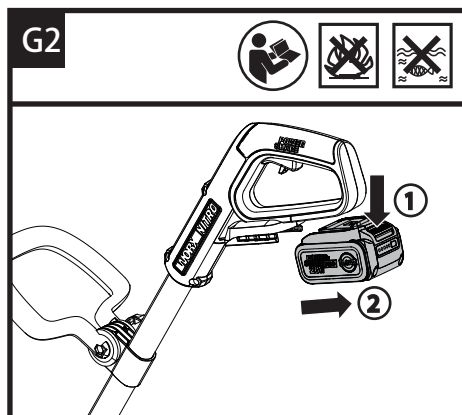
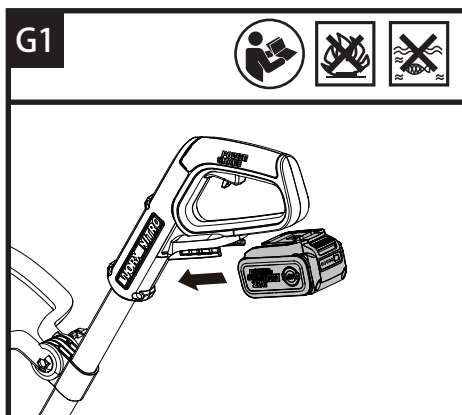


20V 7 in. Cordless Brushless Edger	EN	P07
	F	P13
	ES	P20

WG898 WG898.X







L

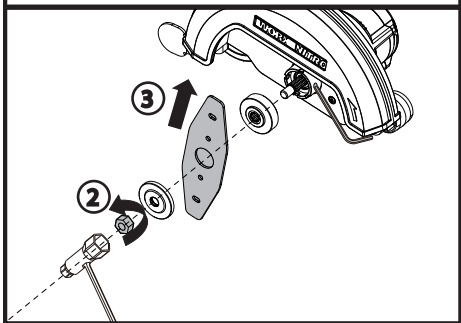



TABLE OF CONTENT

1. PRODUCT SAFETY
2. COMPONENT LIST
3. TECHNICAL DATA
4. ASSEMBLY & OPERATION
5. MAINTENANCE


1. PRODUCT SAFETY

 **WARNING:** Some dust created by power sanding, sawing, grinding, drilling and other construction activities contains chemicals known to the state of California to cause cancer, birth defects or other reproductive harm. Some examples of these chemicals are:


- Lead from lead-based paints;
- Crystalline silica from bricks and cement and other masonry products;
- Arsenic and chromium from chemically-treated lumber.

Your risk from these exposures varies, depending on how often you do this type of work. To reduce your exposure to these chemical: work in a well ventilated area, and work with approved safety equipment, such as those dust masks that are specially designed to filter out microscopic particles.

6

 **WARNING:** This product can expose you to chemicals including lead and Di (2-ethylhexyl) phthalate (DEHP) which are known to the State of California to cause cancer and birth defects or other reproductive harm. For more information go to www.P65Warnings.ca.gov.

IMPORTANT SAFETY INSTRUCTIONS

 **WARNING:** Read all safety warnings and instructions. Failure to follow the warnings and instructions may result in electric shock, fire and/or serious injury.

FOR ALL PRODUCTS:

- 1) Avoid Dangerous Environment - Don't use products in damp or wet locations.
- 2) Don't Use In Rain.
- 3) Keep Children Away - All visitors should be kept at a distance from work area.
- 4) Dress Properly - Do not wear loose clothing or jewelry. They can be caught in moving parts. Use of rubber gloves and substantial footwear is recommended when working outdoors. Wear protective hair covering to contain long hair.
- 5) Use Safety Glasses - Always use face or dust mask if operation is dusty.
- 6) Use Right Product - Do not use product for any job except that for which it is intended.

- 7) Don't grasp the exposed cutting blades or cutting edges when picking up or holding the product.
- 8) Don't Force Product - It will do the job better and with less likelihood of a risk of injury at the rate for which it was designed.
- 9) Don't Overreach - Keep proper footing and balance at all times.
- 10) Stay Alert - Watch what you are doing. Use common sense. Do not operate product when you are tired.
- 11) Store Idle Products Indoors - When not in use, products should be stored indoors in dry, and high or locked-up place - out of reach of children.
- 12) Maintain Product With Care - Keep cutting edge sharp and clean for best performance and to reduce the risk of injury. Follow instructions for lubricating and changing accessories. Keep handles dry, clean, and free from oil and grease.
- 13) Check Damaged Parts - Before further use of the product, a guard or other part that is damaged should be carefully checked to determine that it will operate properly and perform its intended function. Check for alignment of moving parts, binding of moving parts, breakage of parts, mounting, and any other condition that may affect its operation. A guard or other part that is damaged should be properly repaired or replaced by an authorized service center unless indicated elsewhere in this manual.

FOR ALL BATTERY - OPERATED GARDENING Products:

1. Prevent unintentional starting. Ensure the trigger is in the off-position before connecting to battery pack, picking up or carrying the product. Carrying the product with your finger on the trigger or energizing product that have the trigger on invites accidents.
2. Disconnect the battery pack from the product before making any adjustments, changing accessories, or storing product. Such preventive safety measures reduce the risk of starting the product accidentally.
3. Recharge only with the charger specified by the manufacturer. A charger that is suitable for one type of battery pack may create a risk of fire when used with another battery pack.
4. Use products only with specifically designated battery packs. Use of any other battery packs may create a risk of injury and fire.
5. When battery pack is not in use, keep it away from other metal objects, like paper clips, coins, keys, nails, screws or other small metal objects, that can make a connection from one terminal to another. Shorting the battery terminals together may cause burns or a fire.
6. Under abusive conditions, liquid may be ejected from the battery; avoid contact. If contact accidentally occurs, flush with water. If liquid

contacts eyes, additionally seek medical help. Liquid ejected from the battery may cause irritation or burns.

7. Do not use a battery pack or product that is damaged or modified. Damaged or modified batteries may exhibit unpredictable behavior resulting in fire, explosion or risk of injury.
8. Do not expose a battery pack or product to fire or excessive temperature. Exposure to fire or temperature above 130°C may cause explosion.
9. Follow all charging instructions and do not charge the battery pack or product outside of the temperature range specified in the instructions. Charging improperly or at temperatures outside of the specified range may damage the battery and increase the risk of fire.
10. Have servicing performed by a qualified repair person using only identical replacement parts. This will ensure that the safety of the product is maintained.
11. Do not modify or attempt to repair the product or the battery pack (as applicable) except as indicated in the instructions for use and care.

LAWN EDGER SAFETY WARNINGS

1. Keep guards in place and in good working order.
2. Keep blades sharp.
3. Keep hands and feet away from cutting area.
4. Risk of eye injury. Use safety glasses or similar eye protection.

SAFETY WARNINGS FOR BATTERY PACK




- a) Do not dismantle, open or shred battery pack.
- b) Do not expose battery pack to heat or fire. Avoid storage in direct sunlight.
- c) Do not short-circuit a battery pack. Do not store battery packs haphazardly in a box or drawer where they may short-circuit each other or be short-circuited by other metal objects. When battery pack is not in use, keep it away from other metal objects, like paper clips, coins, keys, nails, screws or other small metal objects, that can make a connection from one terminal to another. Shorting the battery terminals together may cause burns or fire.
- d) Do not subject battery pack to mechanical shock.
- e) In the event of battery leaking, do not allow the liquid to come in contact with the skin or eyes. If contact has been made, wash the affected area with copious amounts of water and seek medical advice.
- f) Do not use any battery pack which is not

designed for use with the equipment.

- g) Keep battery pack out of the reach of children.
- h) Always purchase the battery pack recommended by the device manufacturer for the equipment.
- i) Keep battery pack clean and dry.
- j) Wipe the battery pack terminals with a clean dry cloth if they become dirty.
- k) Battery pack needs to be charged before use. Always use the correct charger and refer to the manufacturer's instructions or equipment manual for proper charging instructions.
- l) Do not leave battery pack on prolonged charge when not in use.
- m) After extended periods of storage, it may be necessary to charge and discharge the battery pack several times to obtain maximum performance.
- n) Recharge only with the charger specified by Worx. Do not use any charger other than that specifically provided for use with the equipment.
- o) Retain the original product literature for future reference.
- p) Use only the battery pack in the application for which it was intended.
- q) Remove the battery pack from the equipment when not in use.
- r) Dispose of properly.
- s) Do not mix cells of different manufacture, capacity, size or type within a device.
- t) Keep the battery away from microwaves and high pressure.

SAVE THESE INSTRUCTIONS

SYMBOLS

	To reduce the risk of injury, user must read instruction manual
	Wear ear protection
	Li-Ion battery, battery must be recycled
	Make sure the battery is removed prior to changing accessories.



Do not burn



Batteries may enter water cycle if disposed improperly, which can be hazardous for ecosystem. Do not dispose of waste batteries as unsorted municipal waste.



call2recycle®

POSITEC Inc. has established a partnership with the RBRC Corporation to recycle any Positec batteries with the RBRC-call2recycle seal. For environmental protection, please do not discard batteries in the trash. After the batteries' life cycle is ended, then please call 1-800-822-8837 for a free service that will properly dispose of the battery.

2.COMPONENT LIST

1. REAR HANDLE
2. ON/OFF TRIGGER
3. HANDLE ADJUSTMENT KNOB
4. AUXILIARY HANDLE
5. UPPER SHAFT
6. LOWER SHAFT
7. CUTTING DEPTH ADJUSTMENT KNOB
8. EDGE GUIDE ADJUSTMENT KNOB
9. CUT-LINE INDICATOR
10. FRONT WHEEL
11. REAR WHEEL
12. EDGE GUIDE
13. BLADE
14. WRENCH
15. HEX KEY
16. BATTERY PACK RELEASE BUTTON*
17. BATTERY PACK*

* Not all the accessories illustrated or described are included in standard delivery.

3.TECHNICAL DATA

	WG898 WG898.X**
Maximum output power	320 W
Rated No-load speed	4000/min
Blade Cutting Depth	1.5", 1.75", 2" (3.81cm, 4.45 cm, 5.08cm)
Blade Diameter	7" (17.78cm)
Machine Weight (Bare tool)	7.06 lbs (3.2 kg)

**X may be followed by one or two characters. All models are the same except model number and trademark. The suffix in models may be number from "1" to "999" or English letter "A" to "Z" or "M1" to "M9" which means different package or the various of accessories packed in the package.

SUGGESTED BATTERIES AND CHARGERS

Category	Type	Capacity
20V Battery	WA3674	4.0 Ah
20V Charger	WA3881	2.0 A

We recommend that you purchase your accessories from the same store that sold you the tool. Refer to the accessory packaging for further details. Store personnel can assist you and offer advice.

4.ASSEMBLY & OPERATION

ACTION	FIGURE
ASSEMBLY	
Assembling Shaft Pull the Upper Shaft and lower Shaft in opposite directions until the latch locks. Tighten the screws.	See Fig. A
Assembling the Auxiliary Handle Pull the auxiliary handle apart and nestle away from the base. Adjust to a suitable position. Insert the bolt and nut and tighten the nut.	See Fig. B
ADJUSTING	

Adjusting cut depth	See Fig. C
Raising/lowering Edge Guide	See Fig. D
OPERATION	
Checking the battery charge-level	See Fig. E
Charging the Battery Pack	See Fig. F
Installing and Removing the Battery Pack	See Fig. G1,G2
Starting Press the lock-out switch, then press and hold the ON/OFF Trigger to start the machine.	See Fig. H
NOTE: The lock-out switch prevents the tool from accidentally being turned on.	
Edging	See Fig. I
Referencing the cut-line indicator	See Fig. J
MAINTENANCE	
Replacing the blade	See Fig. K,L

OPERATION INSTRUCTION


NOTE: The edger is a major product and should not be operated simultaneously with other major products on the same household circuit.

 **WARNING: Make sure that other persons and pets are at least 100 feet away.**

EDGING

- Before starting the edger, line up the tool so the edge guide rests against the edge of the paved surface. Both rear wheels should be on the paved surface when edging. (See Fig. I)
- To avoid kickback of edger, tilt the handle down so the blade is above the ground.
- Turn trigger ON and allow blade to spin without moving tool.
- Slowly lift the handle to lower the blade, finding the edge of the paved surface and start edging. Then move tool forward slowly along edge of paved surface, keeping the edge guide pressed lightly against the pavement edge. For the first edging each season, it is best to move forward slowly because grass is thickest then. Subsequent edging will be completed more rapidly. If the tool slows down, back it up an inch or two until the blade comes up to normal speed. During edging some sparks may be generated from hitting stones. This is normal. Do not attempt to edge when the grass or soil is wet or moist—for electrical safety and to prevent clogging of the blade chamber. If you

must edge under conditions that cause the blade chamber to become clogged, release trigger, wait for blade to come to complete stop! **REMOVE BATTERY!** And remove clogged material with a stick. To continue to operate the tool in a clogged condition will seriously overload the motor.

 **WARNING: Do not attempt to unclog the blade chamber by dropping or tapping the tool on the ground. This can damage the unit. Keep hands clear of edge guide and blade when cleaning as these wear to a very sharp point during edging.**

TRENCHING AND LANDSCAPING OPERATION

The edger can also be used for trenching. The blade will leave a small trench for placing wire underground.

Because of the direction of the blade rotation the edger can kickback towards the operator if it hits an obstruction such as thick, matted grass. Keep a firm grasp on the handle, especially when trenching in thick, matted material.

The edger can be used in landscaping applications, including cutting along the edges

of flower and shrubby beds, around trees, and cutting in preparation for sod removal.

Before trenching, inspect and ensure there are no exposed or buried cables, pipes or other objects that may create a hazard or interfere with operating the edger.

Set depth to only that required for the job.


REMOVING AND ATTACHING THE BLADE


Before attempting to remove or install the blade, locate the shaft-lock hole and insert the hex key to lock the blade from spinning (See Fig. K).

The blade, two spacers, and hex head nut with conical washer should be installed/removed in the order shown (See Fig. L). Check that the blade has been properly installed before use.

NOTE: The blade has two wear indicators that indicate replacement - when the blade wears to the small holes, the blade should be replaced.

5.STORAGE

 **WARNING! Disconnect the battery from the tool.** Remove and clean any debris from the outside of the edger and inside of guard before storage. See **MAINTENANCE** section. If necessary, the edger may be stored by hanging on a hook by its handle.

 **WARNING: DO NOT HANG EDGER ON THE Trigger TRIGGER !**

NOTE: Do not store the tool on or adjacent to fertilizers or chemicals. Such storage can cause rapid corrosion.

5.MAINTENANCE

Use only mild soap and damp cloth to clean the tool. Never let any liquid get inside the tool; never immerse any part of the tool into a liquid.

IMPORTANT: To assure product SAFETY and RELIABILITY, repairs, maintenance and adjustment should be performed by authorized service centers or other qualified service organizations. Use only identical replacement parts. Inspect and thoroughly clean your edger at the beginning of each edging season for longer life and better performance.

FOR BATTERY TOOLS

The ambient temperature range for tool and battery use and storage is 32°F-113°F (0°C-45°C).

The recommended ambient temperature range for the charging system during charging is 32°F-104°F(0°C-40°C).



www.worx.com

Copyright © 2023, Positec. All Rights Reserved.

Copyright © 2023, Positec. Tous droits réservés.

© Derechos reservados 2023, Positec. Todos los derechos reservados.

AR